



VT[5]™

INTEGRATED PRODUCTION SUITE

[VT\[5\] Home](#)
[VT\[5\] Info »](#)
[Features](#)
[Options »](#)
[Profiles](#)
[Tutorials](#)
[Downloads](#)
[Register](#)
[More Info](#)
[Buy Now](#)



PRODUCT FEATURES

What's NEW in VT[5]

Live Production

- Advanced NewTek LiveSet™ effects engine
- Completely integrated live virtual set system
- LiveMatte™ provides sophisticated keyer previews
- Optional 8-input SX-SDI switching hardware
- Improved streaming with Push streaming and VC-1 support On-screen Video
- On-screen Video Monitor supports any resolution / aspect
- Monitor offers action safe / title safe overlays
- Still Frame option on capture panel
- iVGA Recorder captures remote client displays as video
- DDRs support different clip aspect ratios
- DDRs support all file formats listed below
- VGA output to projector includes real-time image enhancement
- Clock now on main interface
- CG Designer additions include
- Create/exports title templates for VT[5] or TriCaster™
- Title templates can be exported to Effects bus
- Export pages to Effects bus
- Render scrolls/crawls to any SpeedEDIT™ formats (HDV, etc)

Post Production

- Integrates SpeedEDIT™, World's Fastest Video Editor
- Improved file format support
- HDR and floating-point image support
- Supports all audio channels from 4-channel DV files
- Audio plug-in support for VST audio filters
- VST audio plug-ins included from Voxengo
- CG Post animatable Character Generator
- Real-time Print to Tape for DV with dropped frame alerts
- Control Tree spline nodes support ease-in, ease-out
- Easily change the fielding order of clips
- Improved color correction
- 3-band color correction
- 4-channel selective color correction
- Tool Shed Project Backup wizard
- Time-code burn-in tool for playback overlay
- Advanced new cross-fades
- Dip to color, with selectable colors
- Additive cross-fades
- Additional filters, including Black & white; Sepia

Miscellaneous

- Audio/Video drivers support Windows Media Encoder and Flash encoder
- AVI wrapper has been re-written to support more project features
- SpeedHQ™ codec supports
- 4:2:2 video with and without alpha channel
- 4:4:4 video support with and without alpha channel
- Complete multi-core and multi-CPU decoding
- Customizable UI colors in Preferences
- Significantly improved readability across all modules

Refinements

Reliability

- Drivers no longer take any system resources when VT is not actually running.
- Re-written installer is more reliable, and does not need any path settings.
- Native support for MPEG-1, MPEG-2, MPEG-4, QuickTime, DV, MJPEG
- decoding and encoding, reducing reliance on external codecs.

Performance

- Multi-threaded, taking advantage of multi-core and multi-CPU machines.
- Reduced memory usage for many core operations.
- Aggressively optimized for SSE2 instructions.
- Improved desktop visuals.
- File assets always exist for resolution, frame-rate, audio sample rate, etc...
- All modules fully support aspect ratio.



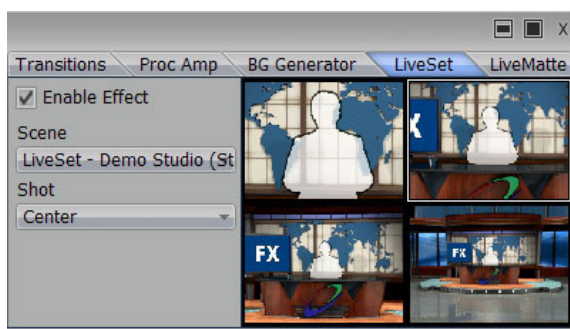
Features



THIS IMAGE SHOWS A WAVEFORM MONITOR, PREVIEW MONITOR, AND PROGRAM OUT DISPLAY WITH AN OVERLAID TITLE FROM THE DOWNSTREAM KEY. UNDERNEATH IS ONE OF THE VIDEO SWITCHER SKINS (16 INPUT VERSION) WITH A CONTROL TAB ON THE RIGHT SHOWING CONTROLS FOR YOUR VIRTUAL SET.

Live Switching:

- LiveSetTM Effects Engine
- Live Virtual Sets - multiple angles and multiple focal lengths per set
- Upstream effects row
- 8 Component inputs
- 8 Y/C inputs
- Up to 24 Composite inputs
- 8 Serial Digital inputs (with SX-SDI)
- DV input Support
- Real-time FireWire input or output
- Automated Audio Mixer
- 4 Component outputs
- 4 Y/C outputs
- 5 SDI outputs (with SX-SDI)
- Preview output
- 4 Composite outputs
- 3 RS-422 machine control ports
- Real-time, advanced chroma keyer
- LiveMatteTM keyer previews of color, edge and spill
- Cue mode in Digital Disk Recorder
- 200+ digital transitions
- Dual GPI In / Out
- 8 Internal Tally light controls
- Background generator
- Internal Genlock



A CLOSE-UP OF THE SWITCHER'S CONTROL TAB SHOWING LIVESETSTM. HERE YOU PICK FROM VARIOUS FOCAL LENGTH SHOTS OF YOUR VIRTUAL SET READY FOR USE WITH YOUR PREVIEWED CAMERA.

Audio Mixer:

- Mix 8 stereo live and 8 4-channel online audio sources
- 4-track audio: 4 discrete channels of audio in and out
- Supports SDI embedded audio (with SX-SDI)
- Talk-over, reduces mix levels for mic inputs to talk over
- 4 adjustable XLR balanced mic / line inputs with Phantom power
- 6 stereo unbalanced audio ins from live sources
- 8 stereo inputs from computer sources
- DV and SDI audio inputs
- Floating point audio with distortion-free audio levels
- EQ, balance, mute and mono for all 16 audio inputs
- Aux Mix: stereo aux send and aux returns for external sweetening
- Automated mixing: transition between audio presets
- Calibrated audio meters
- Audio-follows-video option
- Manage your output mix with Input Pass Thru

- PA Mix Out: for live PA or control room feed
- Balance on all inputs and outputs

Digital Disk Recorder

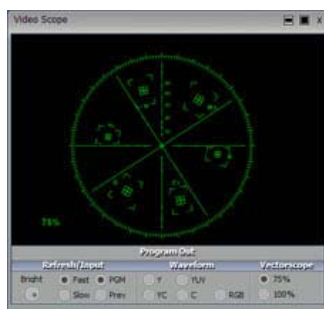
- Multi-format, multi-standard on-screen tape deck
- Compressed or uncompressed playback
- Detects clip aspect ratios for playback
- Play back a single clip or list of clips
- Cue clips to roll when triggered by Switcher
- Real-time transitions between clips
- Count up or count down project time or clip time
- Operate multiple DDRs simultaneously
- EDL import/export (Grass Valley, CMX, Sony, Excel)

Proc Amp:

- Brightness
- Contrast
- Hue
- Saturation
- U Offset, V Offset
- U Gain, V Gain
- Track Preview function
- More than 70 adjustable parameters
- Calibrate computer sources as well as analog sources
- Auto Calibration for 75 IRE bars, 100 IRE bars, video pass-through (requires SX-84)

Video Scope :

- Full-frame data
- 60 fields-per-second
- Monitor Program or Preview
- Waveform of Y/C, Y, C, YUV or RGB
- Vectorscope at either 75% or 100% Chroma



MAINTAIN BROADCAST-QUALITY CONFIDENCE BY MONITORING YOUR VIDEO SIGNAL WITH THE VT[5]'S ON-SCREEN VECTORSCOPE (SHOWN) AND WAVEFORM MONITORS.

Video Monitor :

- Fully fielded on-screen playback
- YUV video display
- Monitor Program, Preview, Key / Aux or DSK buses
- Display supports for 4:3 and 16:9 aspect
- Underscan mode
- Zebra stripes for 75 IRE and illegal video
- Proc-Amp for matching computer display to reference video monitors

CG Designer :

- WYSIWYG text and graphics editing
- Save projects or pages
- Display Program output within CG interface
- Use any installed TrueTypeTM font
- Create Title Templates
- Export Title Templates
- Assign a Title Template to any source in Upstream effects row
- Save pages as 32-bit images or animations
- Soft shadows
- Create graphic objects (boxes, circles, splines)
- Instantly save or recall text styles
- Powerful drawing tools

Title Templates :

- Easy creation of live pages
- More than 80 styles
- Customize/create new templates in CG Designer
- Export any title to upstream effects

iVGA:

- Import external computer displays as switcher source
- Queue up to 3 iVGA sources
- Client provided for Windows and Mac systems
- Software-based scan conversion to video resolution
- Dedicate iVGA output to connected projector
- Digital Video Effects:
 - More than 200 real-time transitions
 - Expansions
 - Wipes
 - Curls
 - Trajectories
 - Fades
 - Overlays
 - Rotations
 - Compressions
 - Borders
 - More...

SpeedEDIT:

- World's Fastest Video Editor
- SD and HD editing
- Real-time HD editing and previewing
- Resolution independent
- Frame-rate independent
- Fully multi-threaded for dual-core and quad-core machines
- SpeedHQTM codec with 4:2:2 colorspace and alpha support
- Integrated Timeline and Storyboard editing
- Unlimited layering in real-time
- 3D control of position, size and rotation of layers in real-time
- Spline-based movement of all animations
- Unlimited undo, saved with project
- Real-time 3-wheel color correction
- 4-band color selection
- No rendering of complex projects required
- Create subprojects within a project
- VST Audio plug-in support
- CG PostTM for moving text
- Project Backup Wizard
- Time-code overlay filter
- Real-time Targa sequence playback
- Multi-format and multi-standard editing
- Real-time playback of compressed and uncompressed clips
- Real-time FireWire in and out
- More than 200 real-time transitions
- Real-time slow motion and reverse
- Real-time chroma and luma keying
- Real-time high-quality scaling of graphics
- Real-time video and audio filters
- Real-time audio mixing of unlimited layers
- 3D audio positioning
- 12dB of audio headroom prevents digital distortion

Deck Controller :

- Control external decks from your VT[5] desktop
- Supports multiple RS-422 and DV decks
- Interfaces with batch capture deck lists and configurations
- Jog and shuttle support
- Record allows user to generate time code settings
- Aura Video PaintTM:
 - Amazingly fast 16-bit paint engine
 - Paint over live video
 - Four-point pixel tracking
 - Color isolation
 - 3D compositing
 - Stroke recorder
- Wide range of text controls
- Instantly use a graphic's alpha channel
- Animate text along a path
- Native DV support
- AVI and QuickTime audio support
- Apply Photoshop® filters to any animation
- VT[5] Supported File Formats

Video Formats:

- AVI
- MPEG-1
- MPEG-2 (program & transport stream)
- HDV
- QuickTime (with alpha support)
- MPEG-4 (including iPod and PSP)
- Raw DV
- DVCPRO 50
- DVCPRO HD
- Image sequences
- Output to Flash

Graphic formats:

- JPEG
- PNG
- Targa
- Tiff
- BMP
- WBMP
- PCX

Audio Formats:

- WAV
- MP3
- AU
- SND
- AIFF
- WAX
- DIF

MPEG-2 support requires appropriate DirectShow player to be installed



LAYOUT YOUR VIDEO PRODUCTION DESKTOP SPECIFICALLY TO SUIT YOUR NEEDS. THIS IMAGE SHOWS A PAIR OF LARGER ON-SCREEN MONITORS FOR PREVIEW AND PROGRAM OUT, COMBINED WITH A SMALLER SWITCHER SKIN FOR AN 8 INPUT PRODUCTION.



© 2008 NewTek, Inc. | [Privacy Policy](#) | [Contact Us](#) | [Buy Now](#)